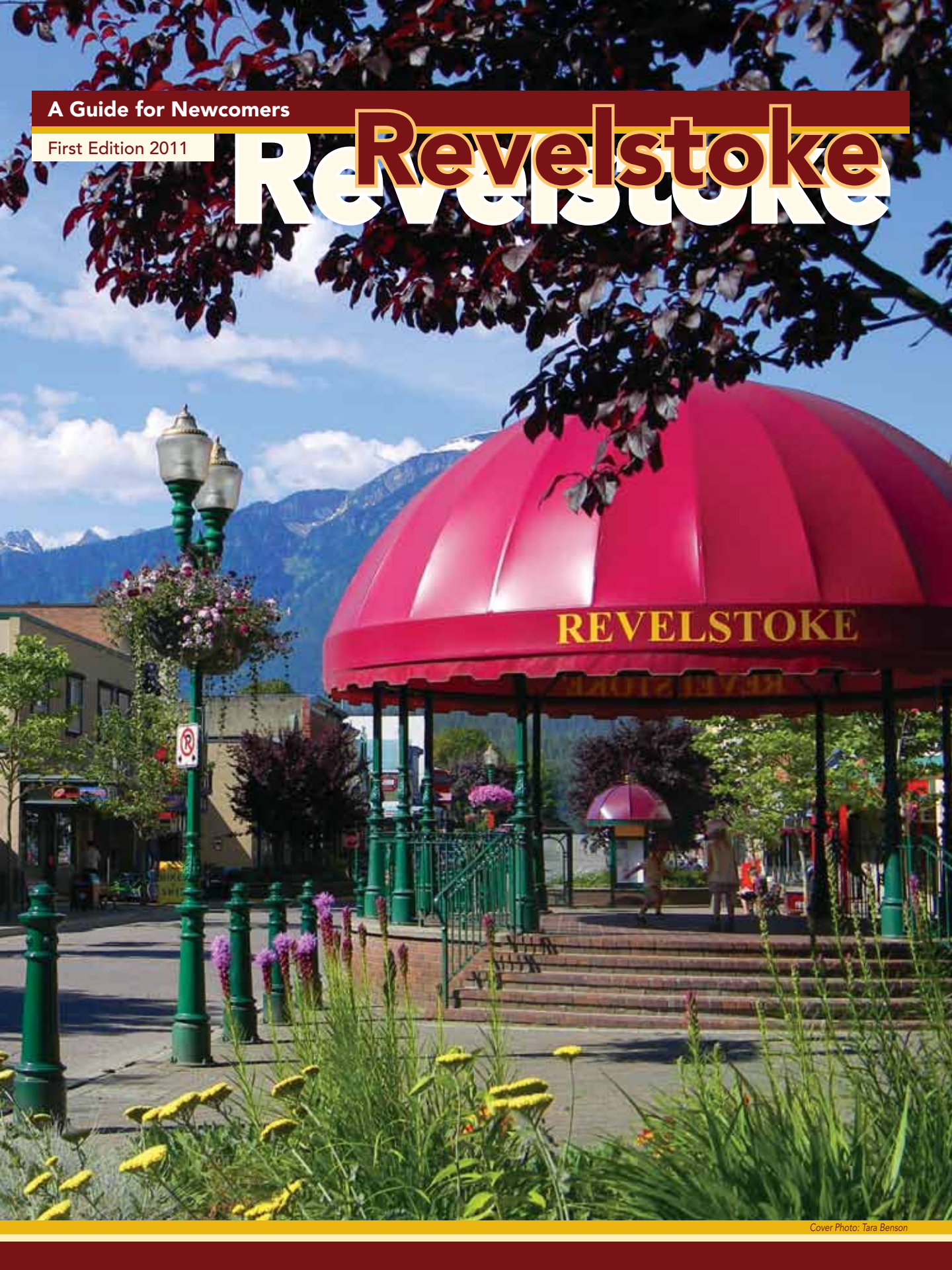


A Guide for Newcomers

First Edition 2011

Revelstoke



WELCOME TO REVELSTOKE

We hope you enjoy your time here!

The Welcome to Revelstoke Guide was produced in partnership with Okanagan College and the City of Revelstoke Social Development Committee



This project is made possible through funding from the Government of Canada and the Province of British Columbia.



Thank you to all of those who contributed to the Guide!



Photo: Courtesy of Evan Batke



Photo: Courtesy of Evan Batke



View from Revelstoke Mountain Resort, Courtesy of Andrew Pacaud

About Revelstoke

Revelstoke is a community of approximately 8,000 people, nestled in the heart of the Columbia Mountains about half way between Vancouver and Calgary. The community is geographically defined, bordered by steep mountains, the Columbia River and Mount Revelstoke and Glacier National Parks.

Since the community's inception in the late 1800s, Revelstoke has experienced population fluctuations and in-migration of workers as a result of mega-projects, such as the construction of the Canadian Pacific Railway, mines, the Trans-Canada Highway, and the damming of the Columbia River at Mica and Revelstoke. Many residents have lived in Revelstoke all their lives, and some families have lived in the community for generations.

The downtown core is a central hub, with most amenities within walking distance. Revelstoke has a vibrant historical component and a diverse economic base. Forestry, public service, transportation, and both summer and winter tourism are primary contributors to the local economy.

Revelstoke has been consistently identified as one of the top 10 places to live in BC, using a wide range of socio-economic indicators. With strong early childhood support and a dynamic school district, Revelstoke is a great place to raise a family. The community is home to BC's first two 'Neighbourhood Learning' centres, which include a new performing arts theatre, gymnastics centre, early learning hub, and youth services facility incorporated into a newly constructed high school and elementary school.

Summer recreational activities abound in Revelstoke's beautiful natural setting: hiking, rock climbing, camping, fishing, mountain & road cycling, bird watching, and boating are all easily accessible. In winter, heavy annual snowfall creates a playground for all winter activities from snowmobiling to skiing. Revelstoke Mountain Resort boasts the longest vertical lift-accessed skiing in North America. Several cat- and heli-ski companies operate in the region. Mount MacPherson cross-country ski area is home to a new lodge and extensive groomed trails.

There is a strong sense of place and community spirit among residents. **Welcome!**

www.welcometorevelstoke.org



Mayor David Raven (March 2011), Photo: Courtesy of the City of Revelstoke

Message from His Worship Mayor David Raven

Revelstoke is a strong, vibrant community. We have much to offer – wonderful recreational opportunities, a great place to raise a family, business opportunities, heritage architecture, cultural events and community spirit. Revelstoke prides itself on its locally owned shops and services offering a surprising diversity not found in other mountain cities. There is something for everyone and I encourage you to look, ask and explore. You will find friendly faces and a willingness to offer assistance.

Much of Revelstoke's vitality is derived from generations of people like yourself who were new to the area and brought with them cultural diversity, talent, skill and a desire to make things happen. We look forward to your contributions.

We hope that you will make Revelstoke your home – *welcome to our community!*

Table of Contents:

1. Living in Revelstoke

- Banks 7
- Business Directory 7
- Children’s Services 8 - 9
- City Services 10
- Communications – Telephone, Cable and Internet 11
- Education, Literacy and Schools 11 - 12
- Food Security 13
- Health and Medical Services 14 - 17
- Housing 18
- Immigrant Services 19
- Legal Services 20
- Ministerial Services and Churches 21
- News and Weather 22
- Pet services 23
- Post Office 23
- Recycling and Garbage Collection 24
- Seniors’ Services 25
- Utilities 26
- Welcome Wagon 26

2. Moving around Revelstoke

- BC Driver’s License 28
- Revelstoke Car Share 28
- Public Transportation 28 - 29
- Airport. 29

3. Community Safety in Revelstoke

- Avalanche Awareness 30
- Search and Rescue 31
- Bear Aware 32
- Bylaws and Animal Control 32
- Emergency Numbers 33
- Emergency Social Services 33
- Food Bank. 33
- Adult Abuse and Neglect. 33
- RCMP Detachment 33
- Crime Stoppers 34
- Fire Department. 34
- Victim’s Services. 34
- Women’s Shelter 34

4. Working in Revelstoke

- Social Insurance Numbers 35
- Employment Services 35 - 36
- Business Development Services 37

5. Government

- Municipal 38
- Federal 38 - 39
- Provincial 39

6. Enjoying Revelstoke

- Arts and Culture. 40 - 41
- Community Events 42
- Community Groups and Organizations. . . 42
- Sports and Recreation 43 - 44
- Parks. 44 - 46
- Public Library 47
- Volunteering. 47

For more information on local services, visit:

www.revelstokesocialdevelopment.org

- Directory of Social Services for Revelstoke and Area
- Seniors' Resource Guide
- Children's Services Directory
- Revelstoke Literacy Directory
- Prenatal Directory

www.revelstokechamber.com/directory

- Revelstoke Travel Guide
- Revelstoke Business Directory

Visitor Information Centres

250-837-5345 or 1-800-487-1493

204 Campbell Ave (year round)

110 Mackenzie Ave (May thru September)

"Coming into town from the east or west, the tin roofs slant steeply, catching the light."



The Revelstoke Bridge, Photo: Courtesy of Evan Batke

Living in Revelstoke

Banks

CIBC

250-837-2151
200 Mackenzie Ave
www.cibc.com

RBC Royal Bank

250-837-5133
123 Mackenzie Ave
www.rbc.com

TD Canada Trust

250-837-6900
406 First St West
www.td.com

Revelstoke Credit Union

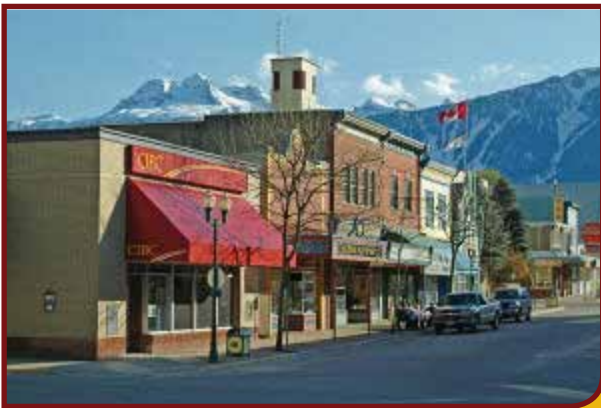
250-837-6291
110 Second St West
www.revku.com

Business Directory

Revelstoke Chamber of Commerce

250-837-5345
204 Campbell Ave
info@revelstokechamber.com
www.revelstokechamber.com

- Revelstoke Business Directory
www.revelstokechamber.com/directory



Downtown Revelstoke, Photos: Courtesy of Evan Batke

Children's Services

Revelstoke Child Care Society

250-837-6669

Room 106, 1401 First St West

revccrr@rctvonline.net

www.childcarechoices.ca/main/Interior/Revelstoke

- Child Care Resource and Referral
- Early Learning Resource Library
- Preschool
- Play in the Park
- Free parent referrals to all early learning and care programs
- Licensed Child Care from infants to school age
- School Aged Children Summer Camps
- Saturday Winter Playgroup

Community Connections

250-837-2920

314 Second St East

info@community-connections.ca

www.community-connections.ca

- Drop In playgroups
- Infant Development Program
- Supported Child Development Program
- Adventure Summer Day Camp
- PACT (Parents and Community Together)
- Youth Services Program
- Counselling Services



Photos: Courtesy of the Early Childhood Development Committee

Columbia Basin Alliance for Literacy (CBAL)

250-837-6669

Room 106, 1401 First St West

tspannier@cbal.org

www.cbal.org

- Family & Community Literacy Programs
- In School Literacy Programs: POPS, PALS, One to one
- Book Exchange & Story Adventure Kit Lending Library
- Mother Goose & Little Goslings

Revelstoke Early Childhood Development Committee

250-837-6669

tspannier@cbal.org

- A coalition of service providers, parents, and businesses interested in creating the best environment possible for the children of the community
- Children First
- Success by Six

Ministry of Children and Family Development

250-837-7612

210 Garden Ave

- Child and Family Services (child protection, family services, resources, adoption)
- Youth Services
- Child and Youth Mental Health
- Child and Youth with Special Needs

Okanagan College – Revelstoke Centre

250-837-4235

1401 First St West

www.okanagan.bc.ca

- Prenatal classes

School District 19

250-837-2101

www.sd19.bc.ca

- Strong Start - Early Learning Centre A free school-based interactive program for children 5 years and under and their parent/caregiver. 250-837-1273. Located at Mt. View School, Room 102.
- Ready, Set, Learn - An engaging event to welcome parents/caregivers and their three-year-old children to their local elementary school for an introduction to the school and community early childhood resources.
- Leap Land Indoor playground – free of charge
- See Education section for school information

Okanagan Regional Library

250-837-5095

605 Campbell Ave

www.orl.bc.ca

- Tiny Tickle, Tales for Tots, Story Time Programs

Interior Health

- Public Health Nurse 250-814-2244
- Speech-Language Clinic 250 837 4285, Room 107, 1401 First St West



Preschools:

Stepping Stones Child Care

250-837-5855

1401 First St West

Toddler Time and Cool Kids Preschool Programs

250-837-9351

Revelstoke Community Centre,
600 Campbell Ave

Jumping Jacks Preschool

250-837-5773

1550 Illecillewaet Rd

Leap and Learn Preschool

250-837-6669

1401 First St West



Photos: Courtesy of the Early Childhood Development Committee

City Services

City of Revelstoke

250-837-2161

216 Mackenzie Ave

info@cityofrevelstoke.com

www.cityofrevelstoke.com

City Council/Administration Department

250-837-2911

Finance Department

250-837-2161

Engineering & Public Works

Main Office 250-837-2922

Public Works Operations Yard 250-837-2001

Planning, Building & Bylaw Department

250-837-3637

Parks, Recreation & Culture

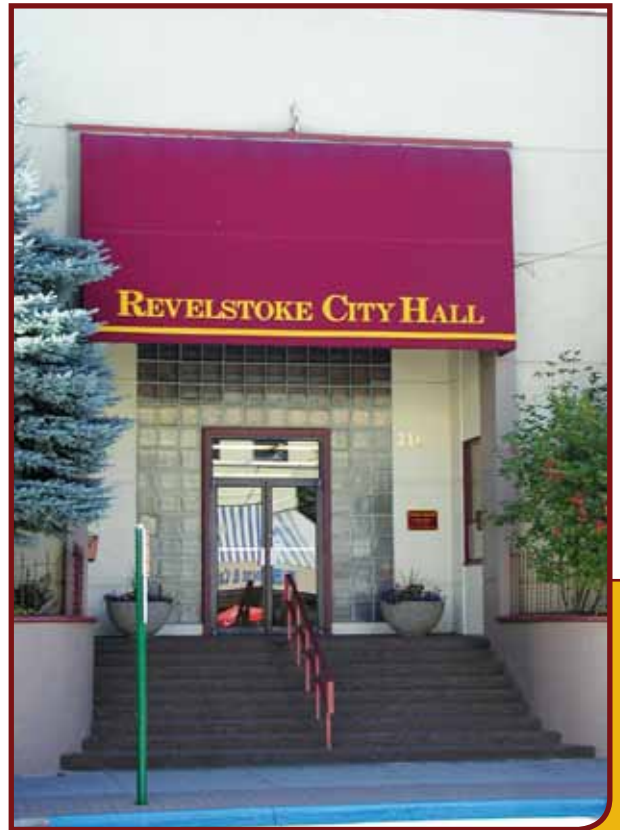
250-837-9351

Revelstoke Fire & Rescue Service

250-837-2884

Community Economic Development & Social Development

250-837-5345



City Hall, Photo: Courtesy of Revelstoke Chamber of Commerce

Education, Literacy and Schools

Okanagan College – Revelstoke Centre

250-837-4235

1401 First St West

<http://www.okanagan.bc.ca>

- Continuing Studies
- Adult Academic & Career Preparation (AACCP)
- Revelstoke Adult Centre of Learning
- English as a Second Language Settlement Assistance Program (ESLSAP)
- Adult Literacy – Volunteer Tutor Program
- Exam Invigilation Services
- Educational Advising

Okanagan Regional Library

250-837-5095

605 Campbell Ave (Community Centre)

www.orl.bc.ca

- Storytime, Tiny Tickle, and Toddler Tales
- Free Internet/wireless Access
- Exams Invigilation
- Book Club

Columbia Basin Alliance for Literacy (CBAL)

250-837-6669

Room 106, 1401 First St West

tspannier@cbal.org

www.cbal.org

- Family & Community Literacy Programs
- In School Literacy Programs: POPS, PALS, One to one
- Book Exchange
- Story Adventure Kit Lending Library
- Mother Goose

Communications – Telephone, Cable and Internet

Revelstoke Cable TV Ltd.

250-837-5246

418 Second St West

www.bccable.net

- Cable TV
- Internet

Telus

250-310-3100 or 250-837-5707

120 Connaught Ave

www.telus.com

- Home Phone
- Internet
- Mobile Phone
- Satellite TV

Public Access Internet Service

600 Campbell Ave

- Community Centre (Wireless access)
- Okanagan Regional Library (Computers and internet access)

200 Campbell Ave

- Chamber of Commerce (Computer and internet access)

*Also some downtown cafes and locations have wireless access



Revelstoke Literacy Action Committee (RLAC)

250-837-6669

tspannier@cbal.org

- RLAC is group of service providers that act as an advisory body to guide community literacy initiatives in Revelstoke.

"We love the free book swap shelves around town."

Revelstoke Board of Education - School District #19

250-837-2101

www.sd19.bc.ca

- Arrow Heights Elementary School
250-837-6360 1950 Park St
- Columbia Park Elementary School,
250-837-4744 120 Colbeck
- Mount Begbie Elementary School,
250-837-4056 420 Downie St
- Mountain View Elementary School,
250-837-3320 601 Second St W
- Revelstoke Secondary School
250-837-2173 301 Tenth St East

"Most kids walk or bike to school."

Registering For School

If you are a Canadian citizen, to register your child for school, go to your neighbourhood school and enquire at the front desk. At the school you will be asked to fill out a registration form and present the child's birth certificate, Medical Services Plan Care Card number, and proof of address.

If your child is not a Canadian Citizen, registration is confirmed by the District Superintendent and a copy of the student's immigration documents is required. Schools are closed in July and August. For more information, please contact 250-837-2101.



Mountain View School, Photo: Courtesy of David Rooney, The Revelstoke Current

Food Security

Community Connections

250-837-2920

314 Second St East

info@community-connections.ca

www.community-connections.ca

- Baby Bundles
- Kids Snack Program
- Community Kitchen

Community Connections Food Bank

250-837-2920 ext 28

600 First St West (Located downstairs at the Legion)

- Free weekly food distribution to those in need - non-perishable food hampers as well as milk, bread, fresh fruit and vegetables.
- Drop in Fridays between 8:30 a.m. to 11 a.m.
- The Christmas Hamper program is also offered in December each year.

Community Garden

North Columbia Environmental Society

250-837-3139

ncesociety@gmail.com

www.northcolumbia.org

- Plots available for public use. Volunteers welcome.
- Garden located at Third St & Mackenzie Ave

Farmer's Market

www.bcfarmersmarket.org

- Outdoor Market: Grizzly Plaza (May - October, Saturday mornings)
- Indoor Market: Community Centre (November - April, every Second Thursday afternoon)

"Many homes have vegetable gardens."



Photo: Courtesy of Sarah Newton

Health and Medical Services

Application for Medical Services Plan of BC (MSP) Enrolment

To qualify for benefits with MSP, a person must be a Canadian citizen or permanent resident, and a resident of British Columbia - physically present in BC at least six months in a calendar year and not a tourist or visitor. If MSP benefits are available through your employer, union or pension plan, contact that agency for information and the appropriate application form. MSP is a premium based plan – residents with limited income can apply for premium assistance.

The application can be downloaded from:

www.health.gov.bc.ca/exforms/msp/enrolment.html

For MSP related questions, call the Health & Seniors Information line at 1-800-465-4911

Physical Health

Dentists

Mackenzie Dental Centre
250-837-5737
101 First St West

Revelstoke Dental Centre
250-837-6231
111 Second St West

Selkirk Dental Clinic
250-837-5149
314 Connaught Ave

Doctors - Medical

Selkirk Medical Clinic
250-837-9321
101, First St East

Hearing

Canadian Hearing Care
250-837-3011
305 First St West

Call BC Healthlink at 811

to speak to a Registered Nurse for health questions 24 hours a day, or visit:

www.healthlinkbc.ca/kbaltindex.asp

The Directory of Social Services for Revelstoke and Area has up-to-date listings for private practice health care professionals.

www.revelstokesocialdevelopment.org

- Acupuncture and Chinese Medicine
- Chiropractic
- Registered Massage Therapy
- Nutrition and Diabetes Counselling
- Occupational Therapy
- Physiotherapy

Home and Community Care

www.interiorhealth.ca

Care options that provide independence, choice and dignity for seniors and adults with disabilities, including:

Home Care Nursing

250-814-2267

Assessment for home care support, assisted living, and residential care & adult day care program; first contact for elder abuse.

Community Care Social Work

250-837-2131 ext 204

Counselling regarding: adult abuse and neglect; client and family adjustment to changes in health; financial concerns; palliative care and bereavement.

Meals on Wheels

250-837-3147

For seniors and people with disabilities who want to maintain an independent life in their homes but are unable to prepare their own meals.

Hospice

Revelstoke Hospice Society

250-837-5523

200 Campbell Ave, Suite A

revhosp@telus.net

www.revelstokehospicesociety.com

- Information, companionship, and emotional support relating to end of life care.

Hospital

Queen Victoria Hospital

250-837-2131

1200 Newlands Rd

www.interiorhealth.ca



- Services related to major trauma, maternity, minor elective surgeries, laboratory and radiology, physiotherapy, outpatient ambulatory care, nutrition, care for the elderly, respite and hospice.

Optometrist

250-837-5244

310 Connaught Ave

www.revelstokeoptometry.ca

Pharmacies

Peoples Drug Mart

250-837-5191

#12-555 Victoria Rd

www.peoplesdrugmart.com/store/revelstoke.html

Pharmasave

250-837-2028

307 Victoria Rd

www.pharmasaverevelstoke.com

Public Health Clinic

250-814-2244

www.interiorhealth.ca

Queen Victoria Hospital, 1200 Newlands Rd.

- Immunizations, hearing screens, speech & language, baby clinics
- Communicable & STD disease investigation, education, and resources
- Prenatal services, support for new mothers, services for children with special needs
- Tobacco education, school health services, and environmental health services

Prenatal Services

- Prenatal Classes are offered regularly by Okanagan College. For more information contact 250-837-4235 or visit www.okanagan.bc.ca. Subsidy available if required.
- For a complete directory of prenatal services contact 250-837-6669 or email tspannier@cbal.org or drop by and pick up at Room 106, 1401 First St West

Red Cross Loan Cupboard

250-814-7767 or 250-837-3738 –

Call and leave a message

970 Begbie Rd (old Big Eddy School)

- Medical supplies and equipment available

SAFER Clinic (Sexual Awareness for Everyone in Revelstoke)

250-837-4481 or

1-800-Sex-Sense (1-800-739-7367)

314 Second St East (Community Connections)

www.wontgetweird.com

- Confidential, unbiased and non-judgmental services open to all ages
- Low cost birth control, condoms, pregnancy, pap tests, and sexually transmitted disease testing
- Someone to talk about relationships and sexual and reproductive health
- Drop-in Wednesdays from 7-9 p.m.

Travel Medicine and Vaccination Clinic

1-888-288-8682

301 First St East

Trees for Tots

250-837-6291 (Randy Driediger)

or 250-837-5179 (Linda Beerling)

- Financial assistance, where possible, to families in Revelstoke whose children need to travel outside our community for specialized medical services

Mental Health

Community Connections

250-837-2920

314 Second St East

www.community-connections.ca

- Individual, family and group counselling services for adults, children and youth.

Community Care Social Work

250-837-2131 ext 204

1200 Newlands Rd (downstairs at Queen Victoria Hospital)

- Counselling and support for older adults

Interior Health Mental Health and Substance Use Services

250-814-2241

www.interiorhealth.ca

1200 Newlands Rd (Queen Victoria Hospital)

- Adult Mental Health (including elderly)
- Alcohol and Drug Counsellor
- Psychiatry

Ministry of Children and Family Development

250-837-7612

210 Garden Ave

- Child and Family Services (child protection, family services, resources, adoption)
- Youth Services
- Child and Youth Mental Health
- Child and Youth with Special Needs

School District 19

250-837-2101

www.sd19.bc.ca

- Assessment & counselling services for students in School District #19 and their families
- Aboriginal support services

Revelstoke Awareness and Outreach Program (RAOP)

250-837-6030

- Trained peer volunteers provide friendship, support and empathy to people isolated by the effects of mental illness
- Drop in center and weekly activities

Substance Use Support Groups

- Alcoholics Anonymous (AA) meets at the Anglican Church (622 Second St West) Monday through Saturday at 12 noon and 8 p.m.
- Alanon meets at the United Church (314 Mackenzie Ave) Mondays and Thursdays at 8 p.m.
- Narcotics Anonymous (NA) meets at the Anglican Church (622 Second St West) Sundays and Wednesdays at 7:30 p.m.

Housing

Community Connections

250-837-2920

www.community-connections.ca

- Housing Outreach worker provides - community based housing services to adults who are homeless, or at risk of homelessness

Revelstoke Community Housing Society

250-837-5345

- Affordable housing options for local residents



Photo: Courtesy of Evan Batke

Rental

Rental accommodations can be found at:

- Revelstoke Times Review
www.revelstoketimesreview.com
- The Stoke List www.thestoke.ca/list
- Revelstoke Property Management
250-837-2489
- Remax (Property Management) 250-837-5121

Real Estate

For a list of local Realtors, please see the phone book www.yellowpages.ca or visit www.revelstokechamber.com/directory

"Revelstoke is such a quaint place that people who live here even know the names of the dogs and where they live."

Immigrant Services

Local

Okanagan College – Revelstoke Centre

250-837-4235

1401 First St West

www.okanagan.bc.ca

- English as a Second Language Settlement Assistance Program (ESLSAP)
Operated at Okanagan College from September to May - free ESL tutoring, weekly classes, field trips, Multicultural Cafe and access to English language software. Canadian immigrants aged 17 years or older are eligible for the program.

Regional

Vernon & District Immigrant Services Society

1-250-542-4612

www.vdiss.com

- A non-profit society offering settlement, employment and English as a Second Language (ESL) serves to immigrants and newcomers, visible minorities, first generation Canadians and their families



Photo: Courtesy of the English as a Second Language Settlement Assistance Program

Provincial

Welcome BC

www.welcomebc.ca/wbc/index.page

- A government website designed to assist prospective immigrants, newcomers, community leaders, and service providers
- Those wanting to live, work, study or invest in B.C. can find information they need, including information about a wide range of programs and resources to support newcomers in B.C.

BC Newcomers Guide

www.welcomebc.ca/wbc/service_providers/publications_and_reports/publications/newcomers_guide.page

- Helpful resources available in multiple languages

Society of Interpreters and Translators of BC

1-604-684-2920

www.stibc.org/page/directory.aspx

- Interpretation Services

National

Citizenship and Immigration Canada

www.cic.gc.ca

Clicklaw

<http://clicklaw.bc.ca/solveproblems/search?f=Immigrants+%26+refugees>

- Resources to solve problems and find help

Legal Services

For up to date listings of local lawyers, notary public and social justice advocacy, see The Directory of Social Services for Revelstoke and Area
www.revelstokesocialdevelopment.org

Duty Council

For more information contact the Legal Aid office in Vernon at 1-250-545-3666 or visit www.ag.gov.bc.ca/family-justice/resources/links

- Drop in on the first Thursday of each month, from 9 a.m. to 2 p.m. at the Revelstoke Courthouse, there is a lawyer available to provide general legal information and assist people with questions about family and criminal law issues. This service is free of charge.

Legal Aid

- Legal Services Society – For information about legal problems and/or if you cannot afford a lawyer call 1-866-577-2525 or visit www.lss.bc.ca
- Legal Aid – The nearest legal aid office to Revelstoke is in Salmon Arm. 1-250-545-3666
- Lawline is a toll-free telephone service that provides general legal information and, in some cases, advice about legal issues. 1-866 577-2525, press 7

Public Guardian and Trustee of BC (PGT)

- For adults who may need help managing their affairs, such as financial, legal and personal care matters. For more information, call 1-604-660-4444 or visit www.trustee.bc.ca

Web-based legal information

- LawLINK is specific to BC residents at www.lawlink.bc.ca
- Family Law in BC at www.familylaw.lss.bc.ca
- PovNet has information about poverty law problems at www.povnet.org



Courthouse, Photo: Courtesy of Evan Batke

Ministerial Services and Churches

Alliance Church

250-837-4008
1559 Illecillewaet Rd
www.revelstokealliance.com

Christian City Church

250-837-4894
108 First St West (above the Royal Bank)
www.c3revelstoke.ca

Fellowship Baptist Church

250-837-9414
1806 Colbeck Rd, Big Bend Hwy
www.revelstokebaptist.com

Kingdom Hall of Jehovah's Witnesses

250-814-2000
250 Basford Dr

Legion Chaplain

250-837-6047

Lutheran Church of the Resurrection

250-837-3330
1502 Mt. View Dr

Revelstoke United Church

250-837-3198
314 Mackenzie Ave
www.revelstokeunitedchurch.com

Seventh Day Adventist Church

250-837-3917
662 Big Eddy Rd

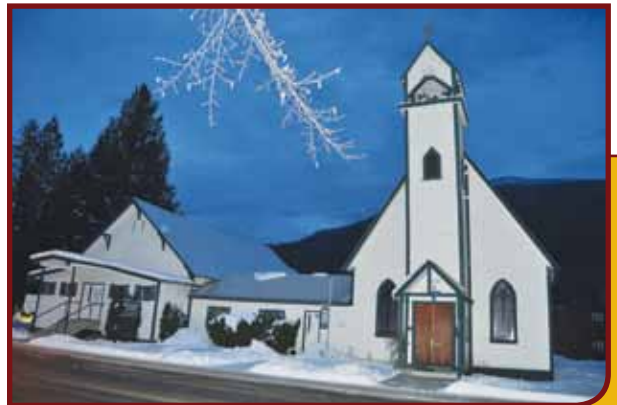
St. Francis of Assisi Catholic Church

250-837-2071
510 Mackenzie Ave

St Peter's Anglican Church

250-837-3275
622 Second St West

"A strong sense of community exists, a sense of place, a sense of neighbourhood and trust."



St. Peter's Anglican Church, Photo: Courtesy of David Rooney, The Revelstoke Current

News and Weather

Revelstoke Times Review

250-837-4667
212 Garden Ave
www.revelstoketimesreview.com

The Revelstoke Current

250-814-9849
editor@revelstokecurrent.com
www.revelstokecurrent.com

Reved

250-837-4676
editor@reved.net
www.reved.net

- Arts, culture and lifestyles quarterly

Highway Condition Report

www.drivebc.ca

Revelstoke Weather Forecast - Environment Canada

www.weatheroffice.ec.gc.ca

"In the spring, huge piles of snow remain and slowly recede. Everyone digs at the snow, breaks it apart, puts on the sprinkler. Melt faster! But the grass is green beneath the ice. Spring flowers, snow drops and crocuses sprout despite 3 feet of snow in the yard. Pussywillows crack leafless branches. Then it will snow one last time. But this is 'cannibal snow' - the snow that takes away the snow. A final wave of winter's white hand."



Downtown Grizzly Plaza at Night, Photo: Courtesy of Evan Batke

Pet Services

Revelstoke Veterinary Clinic

250-837-4530
717 Victoria Road

Revelstoke Humane Society & Animal Control

250-837-4747
1200 East Victoria Road (Public Works Yard)
www.humanesociety.com/revelstoke.html
www.revelstokehumanesociety.wordpress.com

- Responds to and provides shelter to animals in distress

Post Office

Canada Post

250-837-3228
301 3rd Street West
www.canadapost.ca

"Drive slowly on Third Street when going past the Post Office because people walk across the road from every direction!"



Photo: Courtesy of Linda Chell



Photo: Courtesy of Evan Batke

Recycling and Garbage Collection

City of Revelstoke

250-837-2161

216 Mackenzie Ave

www.cityofrevelstoke.com

- Garbage removal (See website for pick up days)
- Recycling bins located at 1200 East Victoria (Revelstoke Forum)

"If you see trash, pick it up."

Columbia Shuswap Regional District Refuse Site

330 Westside Rd

www.csr.bc.ca

- Price determined by weight of garbage
- Open year round Monday – Saturday 10 a.m. - 4 p.m. (Closed Statutory holidays)

Revelstoke Bottle Depot

250-837-2693

97 Cartier St

- Refundable beverage containers
- Milk jugs
- End-of-life electronics
- Paint care products



"One weekend morning, I saw a City Councilor walking along the River Trail with a bucket, enjoying the day and picking up litter on his own time."

Going Green in Revelstoke – A Toolkit

Everything you need to know about living an environmentally sustainable lifestyle, including local resources and second hand stores.

Visit www.northcolumbia.org

Produced by the North Columbia Environmental Society



Recycling Bins, Photo: Courtesy of David Rooney, The Revelstoke Current

Seniors' Services

Revelstoke Seniors Resource Guide

available at:

www.revelstokesocialdevelopment.org

or pick up at the Seniors Centre

Elder Abuse and Neglect

Community Response Network

Abuse Response line - 250-814-2267 or for

developmentally disabled adults 250-832-1720

www.bccrns.ca

- Response to adult abuse, neglect, and self-neglect for people aged 19 years and older & coordinated under the Adult Guardianship Act

Home and Community Care

For seniors and adults with disabilities

250-814-2267

www.interiorhealth.ca

- Community care nursing
- Adult day program
- Respite
- Assisted living
- Residential care
- Community care social work

Revelstoke Senior's Citizens Association and Seniors Centre

250-837-9456

603 Connaught (Behind the Community Centre)

- Various activities, including: monthly birthday party, bowling, card playing, choir, computer centre, potluck supper, 'Toonie' aqua-fit and fitness classes, etc.
- Schedule posted at Seniors Centre

Seniors Counsellor

250-837-9456

Wednesday mornings at the Seniors Centre

- For assistance with forms and applications

Veterans' Affairs

250-837-6047

Monday to Friday 9 a.m. - 12 noon

- Information and assistance for War Veterans and spouses



Revelstoke Senior's Centre, Photo: Courtesy of David Rooney, The Revelstoke Current

Utilities

BC Hydro (electricity)

250-814-6600

www.bchydro.com

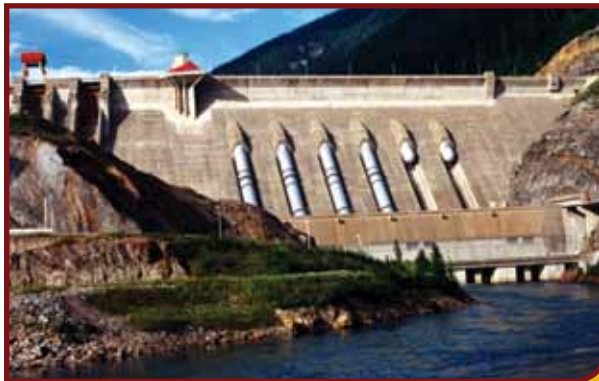
FortisBC (gas)

1-888-224-2710

www.fortisbc.com

Some houses are heated with oil.

For local delivery of oil, see the yellow pages under 'Oil Companies'



Revelstoke Dam, Photo: Courtesy of Revelstoke Chamber of Commerce

Welcome Wagon

Welcome Wagon

1-866-856-8442

www.welcomewagon.ca

- Community Welcome and Baby Welcome - a personal visit from the local Welcome Wagon representative, with valuable information about Revelstoke area and services, and gifts from local businesses

"Everyone is so friendly – look up, catch the eye of a passerby, smile, and say hello."



Photo: Courtesy of Evan Batke

Moving Around Revelstoke



Grizzly Plaza, Photo: Courtesy of Tara Benson

Finding Your Way

Please note that for numbered streets (for example, First St or Second St), Mackenzie Ave in downtown Revelstoke is the division between East and West.

Biking around Revelstoke

is fun and easy to do. Thrift shops, consignment stores and bike shops have second hand bikes. As well, used bikes are often posted for sale on community bulletin boards or at www.thestoke.ca/list. Check it out!



Riding around Revelstoke, Photo: Courtesy of Debbie Koerber

"Often people refer to locations not by street names, but by former landmarks!"

BC Driver's License

Revelstoke Service BC Centre

250-837-6981

1123 Second St West, Room 104

(Located in the Courthouse)

- For information about obtaining a BC driver's license, visit www.icbc.com

Revelstoke Car Share

Revelstoke Car Share

250-837-5445

www.nelsoncar.com

- The Revelstoke branch of the Nelson Carshare Coop has two cars and a 4x4 truck for its members, which offers the benefits of vehicle use without the hassles of ownership.

Kootenay Rideshare

www.kootenayrideshare.com

- A free service to the community that helps to connect riders and drivers. If you need a ride somewhere or if you could use some help with driving and costs, you can post on this website.

"Lots of people ride their bikes all year – carrying skis, groceries..."

"If you wash your car in the winter here, a little while later you may have to melt the ice around the doors (and in the locks)."

Public Transportation

Revelstoke Public Transit Service

250-837-3888

www.busonline.ca/regions/rev/?p=2.list

- A route map and schedules can be picked up at the Community Centre or City Hall
- Purchase a city bus pass at City Hall
- All buses are wheelchair accessible and are equipped with bike racks

BC Bus Pass Program

1-866-866-0800

- For seniors and persons with disabilities on restricted incomes, there is an annual bus pass that allows unlimited travel on the community bus.

Health Connections Bus

250-837-3888 or 1-866-618-8294

- A program that provides same day transportation to non-emergency medical appointments to Kamloops on Tuesday and Kelowna on Wednesday



Ski Resort Shuttle, Photo: Courtesy of Evan Batke

Door-to-Door HandyDART and Taxi-pass

250-837-3888

- Transportation service for people with disabilities
- Users must pre-register (250-837-2131)
- All trips must be booked 24 hours in advance

Disabled Parking Pass

SPARC BC

1-604-718-7744

www.sparc.bc.ca/parking-permit

- Download an application, have one mailed to you, or pick up at the medical clinic

Revelstoke Transit Shuttle (Ski Resort Shuttle)

<http://www.revelstokemountainresort.com/resort/getting-here/by-bus-.html>

- Regular shuttle bus service is available from the town of Revelstoke to Revelstoke Mountain Resort throughout the ski season starting mid-December

Your Keys Pleez

250-837-4699

- Designated driver service to provide pub/restaurant patrons safe transportation home in their own vehicles.

Greyhound Canada

250-837-5874

1899 Fraser

www.greyhound.ca

- Out of town bus transportation

Taxi Service

- R Taxi 250-837-4000
- Johnnie's Taxi 250-837-3000

Airport

Revelstoke Airport

250-837-7007

2913 Airport Way

- Revelstoke has a full service airport with a 1,460 meter paved runway, terminal building, fuelling facilities and hangers. Charter aircraft and helicopter services are available. The airport does not have instrument landing capabilities and does not have scheduled commercial airline service.
- Scheduled regional service with national and international connections is available in the nearby centers of Kelowna and Kamloops, with ground transport to Revelstoke.
- International access is available to gateway airports in Calgary and Vancouver, transferring to regional airlines and/or ground transport.

Stoke Shuttle - Revelstoke Connection

1-888-569-1969

www.revelstokeconnection.com

- Return airport transfer and shuttle service from Revelstoke to Kelowna and Calgary International Airports.

Community Safety in Revelstoke

Avalanche Safety and Awareness

Canadian Avalanche Association and Avalanche Centre

250-837-2435

110 Mackenzie Ave

canav@avalanche.ca

www.avalanche.ca

- Canada's national organization promoting avalanche safety
- Dedicated to bringing the avalanche community together to develop knowledge and understanding of avalanches, facilitate communication, promote professionalism, and provide quality avalanche education



Avalanche in Glacier National Park, Photo: Parks Canada



Snowmobilers

Photo: Courtesy of City of Revelstoke

Before heading out into the backcountry:

- Get in touch with the Canadian Avalanche Centre to check for updates
- Be sure to sign in with Parks Canada and purchase a backcountry permit if traveling in the National Parks
- Carry proper safety equipment and have the training to use it
- Always travel with a buddy
- Let others know where you are going and for how long

Search and Rescue

Revelstoke Search and Rescue

250-837-4187

(Emergency Contact: 250-814-1866 or

250-814-8494)

revsar@telus.net

www.bcsara.com



Zuzana Driediger and Hero train for avalanche rescue, Photo: Zuzana Driediger



Parks Canada helicopter sling rescue on Mount Sir Donald. Photo: Parks Canada

Bear Aware

Revelstoke Bear Aware

250-837-8624

bearaware@telus.net

www.revelstokebearaware.org

- Reduce bear-human conflict
- Keep bears out of our neighbourhoods, keep our community safe and prevent the unnecessary destruction of bears
- To report bear sightings or problem bears please call 1-877-952-7277

Bylaws and Animal Control

Visit the City of Revelstoke website

www.cityofrevelstoke.com/bylaws

Or call the City of Revelstoke Planning, Building and Bylaw Department

250-837-3637



Grizzly Bear

We live in Bear Country!

Please take responsibility for your bear attractants.

Secure garbage, fruit, birdseed, compost, livestock feed, and pet food in a place not accessible to bears.



Black Bear eating birdseed, Photo: Noleen Mostert (2010)

Emergency Numbers

For All EmergenciesCALL 911

- Revelstoke Crisis Line 250-837-6601
- Children's Help Line 250-310-1234
- Poison Control Centre 1-800-567-8911
- Search and Rescue 250-814-1866
. or 250-814-8494
- Victim Services 250-837-9260
- Victim Link 1-800-563-0808
- Women's Shelter 250-837-1111
- Youth Against Violence 1-800-680-4264

Emergency Social Services

Emergency Social Services

250-837-2884 or 250-837-8585

www.revemergency.com

www.ess.bc.ca

www.pep.bc.ca

- Provides basic short-term services required by people who are forced from their homes by disasters
- Food, lodging, clothing, family reunification, and emotional support

Food Bank

Community Connections Food Bank

250-837-2920 ext 28

600 First St. W (Located downstairs at the Legion)

- Free weekly food distribution to those in need - non-perishable food hampers as well as milk, bread, fresh fruit and vegetables.
- Drop in Fridays between 8:30 to 11:00 am

Adult Abuse and Neglect

Community Response Network

Abuse Response line - 250-814-2267 or for developmentally disabled adults 250-832-1720
www.bccrns.ca

- Response to adult abuse, neglect, and self-neglect for people aged 19 years and older & coordinated under the Adult Guardianship Act

RCMP

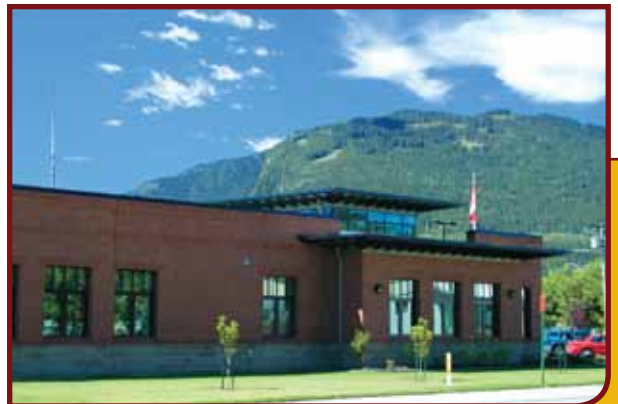
Royal Canadian Mounted Police

Revelstoke Detachment

250-837-5255

404 Campbell Ave

www.bc.rcmp.ca



RCMP Station, Photo: Courtesy of City of Revelstoke

Crime Stoppers

1-800-222-8477

www.revelstokecrimestoppers.com

- An anonymous and independent community service program
- Cash rewards for information leading to an arrest or solution of a crime

Fire Department

Revelstoke Fire Department

250-837-2884

227 Fourth St West



Fire Truck, Photo: Courtesy of David Rooney, The Revelstoke Current

Victim Services

250-837-9260

victim.services@cityofrevelstoke.com

- Police-based support services for victims of any crime or trauma, including family and/or sexual violence, staffed by people trained to help victims
- Free of charge
- Services may include crisis intervention, practical assistance, emotional support, help applying for criminal injury compensation, accompanying you to court, referral to other agencies and information on the progress of a police investigation

Women's Shelter

Revelstoke Women's Shelter Society Forsythe House – A Safe Place

250-837-1111 or 250-837-4382

forsythe@telus.net

- The Revelstoke Women's Shelter Society is a non-profit society that provides safe refuge and support to women (and their children) at risk of all forms of abuse

Working in Revelstoke

Social Insurance Numbers

A Social Insurance Number (SIN) is required to work in Canada. To find out more about obtaining a Social Insurance Numbers, visit:

www.servicecanada.gc.ca

or call 1-800-206-7218

Employment Services

Revelstoke Employment Services Centre

250-814-0244

117 Campbell Ave

www.resc.ca

- Support for resume and cover letter writing
- Labour market research
- Interview skills
- Job search & employment facilitation
- Referrals to other programs like the Employment Wage Subsidy program and Self-Employment Benefit Program



Bowman Employment Services

250-832-7778

info@bowmanemployment.com

www.bowmanemployment.com

- Training for unemployed eligible persons who are having difficulty finding work due to a lack of skills or certification
- Eligible persons must be currently receiving Employment Insurance Benefits or have had an EI claim in the last 3 years, or a parental or maternity claim in the last 5 years



Photos: Courtesy of Revelstoke Employment Services Centre

Community Futures Development Corporation of Revelstoke

250-837-5345

204 Campbell Ave

www.revelstokecf.com

- Self-employment program - eligible persons must be currently receiving Employment Insurance Benefits or have had an EI claim in the last 3 years, or a parental or maternity claim in the last 5 years
- Financial support, business counselling and business training for those establishing a new business

Community Futures Development Corporation of Salmon Arm

1-250-803-0156

www.futureshuswap.com/wage_subsidy_program.php

- Employment wage subsidy program

Goshen Consultants Inc.

1-877-832-3696

info@goshen.ca

www.goshen.ca

- Employment Program for Persons with Disabilities (EPPD), and other specialized programs for persons with disabilities
- Employment counselling, residential and life skills support



New school construction site, Photo: Courtesy of David Rooney, The Revelstoke Current

"I walk to work."

Business Development Services

City of Revelstoke Community Economic Development

250-837-5345

204 Campbell Ave

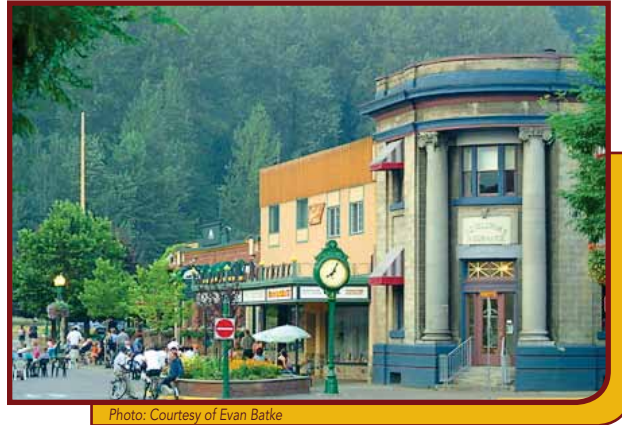
amason@cityofrevelstoke.com

www.cityofrevelstoke.com

The Community Economic Development Department is responsible for:

- Promoting Revelstoke as a place to live and do business
- Providing services to assist with business retention and expansion
- Developing and implementing the Community Development Action Plan, which includes economic, social and environmental goals and objectives Implementing the Tourism Infrastructure Strategy

benefits the community of Revelstoke.



Community Futures Development Corporation of Revelstoke

250-837-5345

204 Campbell Ave

cfdc@revelstokecf.com

www.revelstokecf.com

- A non-profit community based agency that provides advice, direction, information and financing to help start, purchase, strengthen or expand businesses

Revelstoke Chamber of Commerce

250-837-5345

204 Campbell Ave

info@revelstokechamber.com

www.revelstokechamber.com

- A non-profit organization comprised of businesses, professionals, residents and other community groups that work together to achieve a healthy economic environment that

Government

Municipal Government

City of Revelstoke

250-837-2161

216 Mackenzie Ave

www.cityofrevelstoke.com

- Municipal Elections take place every 3 years (November 2011)

Provincial Government

Revelstoke Service BC Centre

250-837-6981

1123 Second St West, Room 104 (Located in the Court House)

www.gov.bc.ca

- "B" Licence Applications and Permits for Casinos and Bingos
- BC Assessment
- BC Hydro Payments
- BC Parks Reservations
- StudentAid BC
- Birth, Death and Marriage Certificate Applications
- Boater Safety Program
- Child Care Subsidy Program
- Commercial Vehicle Inspection Program Decals and Forms
- Commissioner for Taking Affidavits
- Community Access Terminal
- Company Name Searches and Registrations
- Deputy District Registrar of Voters
- Driver's Licence Services
- Electrical and Gas Permits
- Fish and Wildlife Licences
- Freedom of Information Act Applications

- Land Title Searches and Information
- Legal Services Society Forms and Access
- Logging Tax Payments
- Manufactured Home Searches, Relocation Permits and Registrations
- Marriage Licences
- Medical Services Plan Registration and Billing Payments
- Mineral Titles Online
- Ministry of Employment and Income Assistance Services
- Navigable Waters Federal Government
- OneStop Business Registration
- Personal Property Registry
- Pesticide Exams
- Property Tax Information and Collections
- Provincial Property Tax Collector
- Registrar of Voters
- Residential Tenancy Information

Member of the Legislative Assembly

www.leg.bc.ca/mla

Provincial Contact Information

- Child Care Resource and Referral
250-837-6669
www.mcf.gov.bc.ca/childcare
www.childcarechoices.ca
- Child Care Subsidy
250-837-6669
www.mcf.gov.bc.ca/childcare
or for advice on financial help for eligible families to meet child care costs call
- Community Care Facilities Licensing
www.healthplanning.gov.bc.ca/cf

- **ECE Registry**
registry & renewal of early childhood educators
250-837-6669
www.mcf.gov.bc.ca/childcare/ece
- **Employment and Income Assistance**
1-866-866-0800 and ask for a pre-application
number to be assigned to you, then go to:
www.weborientation.gov.bc.ca/intro.asp
or www.gov.bc.ca/hsd
- **Enquiry BC**
general enquiries 1-800-663-7867
EnquiryBC@gems3.gov.bc.ca
www.gov.bc.ca
- **Government Agent Revelstoke**
1123 Second St West
250-837-6981
- **Help Line for Children**
250-310-1234
- **Housing – BC Housing**
1-800-834-7149
www.bchousing.org
- **Interior Health**
250-837-2131
www.interiorhealth.ca
- **Medical Services Plan (MSP)**
1-800-663-7100
- **Ministry of Children and Family Development**
located at 210 Garden Ave
250-837-7612
john.yakielashek@gov.bc.ca
www.mcf.gov.bc.ca
- **Vital Statistics**
Kelowna Office 250-712-7562
www.vs.gov.bc.ca
- **Workers' Compensation**
1-888-967-5377
www.worksafebc.com

Federal Government

www.canada.gc.ca

Member of Parliament

<http://webinfo.parl.gc.ca>

Federal Contact Information

- Canada Mortgage & Housing Corp.
www.cmhc-sch.gc.ca
- Canada Pension Plan 1-800-277-9914
www.hrsdc.gc.ca
- Canada Revenue Agency
www.cra-arc.gc.ca
- HST Credit 1-800-959-1953
- Tax Refund Status 1-800-959-1956
- Tax info phone service 1-800-267-6999
- Child Tax Benefit 1-800-387-1193
www.cra-arc.gc.ca
- Citizenship & Immigration . . . 1-888-242-2100
www.cic.gc.ca
- Employment Insurance
Enquiries 1-800-206-7218
- Employer Services. 1-888-800-9612
- Foreign Worker Confirmations . 1-888-246-7712
- Employment Services 1-800-304-0595
- Old Age Security 1-800-277-9914
www.hrsdc.gc.ca
- Parks Canada 250-837-7500
www.pc.gc.ca
- Passport Canada 1-800-567-6868
www.pptc.gc.ca
- Service Canada 1-800-622-6232
www.canada.gc.ca
- Social Insurance Numbers . . . 1-800-206-7218
www.hrsdc.gc.ca
- Veterans Affairs Canada 1-866-522-2122
www.vac-acc.gc.ca

Enjoying Revelstoke

Arts and Culture

Revelstoke Arts Council

250-837-5125

- A non-profit agency that supports and promotes the visual and performing arts in Revelstoke.
- The umbrella organization for the Concert Series, Community Band, Theatre Company, Musical Productions, and Summer Street Festival

Revelstoke Visual Arts Centre (Art Gallery)

250-814-0261

320 Wilson St

Info@revelstokevisualarts.com

www.revelstokevisualarts.com

- Local artists and invited guests showcase their works in a variety of mediums

Revelstoke Theatre Company

250-837-3687

- The Revelstoke Theatre group features various performances and exhibits throughout the year
- Check with the Visitor Centre for shows, special events and performances

The Roxy Theatre

250-837-5540

115 Mackenzie Ave

www.roxytheatre.info

- Movies, live-streaming of concerts, theatre performances and opera



The Roxy Theatre, Photo: Courtesy of David Rooney, The Revelstoke Current

Revelstoke Nickelodeon Museum

250-837-5250

111 First St West

www.revelstokenickelodeon.com

- Victorian music boxes, 18th century self-playing organs and classic pianos may be heard while touring Canada's only mechanical music museum
- Monthly film nights and Victorian Magic Lantern shows

The Revelstoke Museum and Archives

250-837-3067

315 First St West

revelstokemuseum@telus.net

www.revelstokemuseum.ca

- A unique display of Revelstoke's history. Housed in the former post office and customs building, constructed in 1926. This beautiful brick heritage building has been home to the Museum and Archives since 1974.
- Heritage Garden open to the public during museum hours

Revelstoke Railway Museum

250-837-6060

719 Track St West (next to Victoria Road)

railway@telus.net

www.railwaymuseum.com

- The museum presents the history of the Canadian Pacific Railway in the region as well as the role the railway, and its workers have played in building Canada as a nation. Home of the Revelstoke Model Railroad Society. Open year-round.

BC Interior Forestry Museum

250-837-8078

Hwy 23 N, 4 km north of Revelstoke

www.bcforestrymuseum.ca

- Artifacts and displays depicting work of generations of loggers and the history of Revelstoke's forestry industry

Art First!

250-837-2212

113 First St West

- North Columbia Artists' Cooperative Gallery

"Many families have been here for generations."



Revelstoke Dam Visitor Centre

250-814-6697

- 5 km north of Revelstoke on Hwy 23N
- Open mid-May thru mid-October

Revelstoke Firefighters Museum

250-837-4892

227 Fourth St West

Community Events

Chamber of Commerce – Events Calendar

www.seerevelstoke.com/events

- An up-to-date monthly calendar of everything that is happening in Revelstoke

City of Revelstoke

250-837-9351

600 Campbell Ave

www.cityofrevelstoke.com/parks-rec/events

- Information on community programs, special events
- Program and Leisure Guide

The Revelstoke Current – What's on this Week

www.revelstokecurrent.com

Revelstoke Times Review – Community Calendar

www.revelstoketimesreview.com

Revelstoke Grizzlies

Junior B Hockey Club (Home Games)

250-837-5588

www.revelstokegrizzlies.com

A highlight each year is the Summer Street Fest!

Every night, all summer long the Arts Council presents free, live music in downtown Revelstoke's Grizzly Plaza. Come listen to all kinds of music from local bands playing jazz, folk or rock to touring musical groups.



Summer Street Festival, Photo: Courtesy of Evan Batke

Sports and Recreation

There are many local sports and recreation clubs, organizations and community programs. For a list of groups and up to date contact information, contact Community Centre reception at 250-837-9351 or download the latest Program and Leisure Guide at www.cityofrevelstoke.com



Revelstoke Community and Aquatic Centre

250-837-9351

600 Campbell Ave

- Community meeting, convention and event space
- Dance studio, fitness center and gymnasium
- Indoor swimming pool with special features, including a water slide
- Attached Library and Seniors Centre



Swimming Pool/Golf Course, Photos: Courtesy of Revelstoke Chamber of Commerce

Bowling

The Cabin

250-837-2144

200 First St East

Golf

Revelstoke Golf Club

250-837-2440

171 Columbia Park Dr

www.revelstokegolfclub.com

- 18 hole riverside championship course

Ice Sports

Revelstoke Forum

250-837-4040

1100 Vernon Ave

- Public skating, hockey, figure skating arena

Revelstoke Curling Club

250-837-4356

1100 Vernon Ave

info@revelstokecurlingclub.com

Squash

The Racquet Den

207 Mackenzie Ave (downstairs)

membership@racquetden.com

www.racquetden.com

Skiing

Revelstoke Mountain Resort (RMR)

250-814-0087

2950 Camozzi Rd

www.revelstokemountainresort.com

- Lift-serviced downhill skiing and more

Revelstoke Nordic Ski Area & Club

250-837-7303 (snow phone)

Lodge & trails located off of Highway 23 South

info@revelstokenordic.org

www.revelstokenordic.org

- Classic cross country and skate skiing groomed trails

Snowmobiling

Snowmobile Revelstoke Society

www.sledrevelstoke.com



Downhill Skiing, Photos: Courtesy of Revelstoke Chamber of Commerce



Revelstoke Mountain Resort, Photos: Courtesy of Revelstoke Chamber of Commerce

City Parks

Queen Elizabeth

219 Ninth St East (Downtown area)

- Playground, picnic area, tennis courts, ball & soccer fields

Kovach Park

110 Edward St (Southside area)

- Playground & skateboard park

Centennial Park & Ball Fields

Centennial Park Dr (Downtown area)

- 6 Baseball Diamonds, 3 soccer fields & 1 clay running track
- Picnic area
- Boat launch

Beruschi Park

303 Second St East (Downtown area)

- Playground

Farwell Park

100 block First St West (Farwell area)

- Playground, wading pool, picnic area

Big Eddy Park

1800 Griffiths Rd (Big Eddy area)

- Playground & ball field

Moose Park

1800 Park Dr (Arrow Heights area)

- Playground

Columbia Park

137A Colbeck Rd (Columbia Park area)

- Tennis court, hockey court

Illecillewaet Greenbelt and River Trail

- Riverside walking, biking, interpretive panels, bird watching
- The paved River Trail runs from Centennial Park to the Illecillewaet Bridge
- Greenbelt trails run below the dike along the rivers

Williamsons Lake

Williamson Lake Rd

- Swimming, beach, dock, concession & playground. Camping available.

Woodenhead Park

1901 Mutas Road (TransCanada highway area)

- Playground and picnic area

"Wild huckleberry and mushroom picking happens in abundance....but good picking spots are kept oh so secret."

For more information on local recreation opportunities visit:

- Revelstoke Summer Tourism
www.seerevelstoke.com/vacation
- Revelstoke Winter Tourism
www.seerevelstoke.com/snow
- BC Provincial Campgrounds (West Kootenay region)
www.westkootenayparks.com



Green Belt, Photo: Courtesy of City of Revelstoke



(Children) Photos: Courtesy of the Early Childhood Development Committee



Revelstoke

National & Provincial Parks

Parks Canada: Mount Revelstoke & Glacier National Parks

250-837-7500

301 Third St West

www.pc.gc.ca

- Camping, hiking, climbing, mountaineering, ski touring, scenic drives, and interpretive trails for all ages and abilities

Friends of Mount Revelstoke & Glacier

250-837-2010

fmrg@telus.net

www.friendsrevglacier.com

- A non-profit society supporting the protection, appreciation, education & understanding of Mount Revelstoke and Glacier National Parks

Provincial Parks: Arrow Lakes, Blanket Creek & Martha Creek

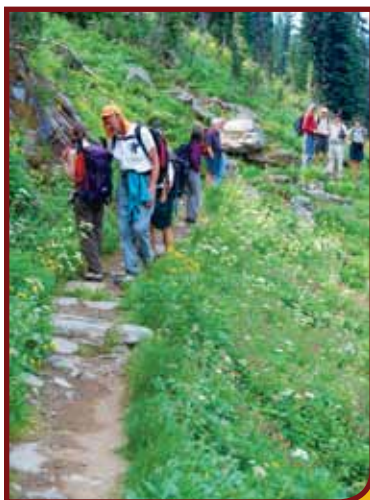
information@westkootenayparks.com

www.westkootenayparks.com

- Camping, swimming, day use, hiking, attractions



Photos: Courtesy of David Rooney, The Revelstoke Current



Public Library

Okanagan Regional Library

250-837-5095

605 Campbell Ave

www.orl.bc.ca

Library Services:

- Books, magazines, newspapers, DVDs, audio books and reference materials
- Programs for children and adults
- Free in-branch Internet access at computer workstations or wireless access
- Free exam invigilation

Hours of Operation:

Sunday/Monday	Closed
Tuesday	noon - 8 p.m.
Wednesday	noon - 7 p.m.
Thursday	10 a.m. - 4 p.m.
Friday	10 a.m. - 5 p.m.
Saturday	10 a.m. - 5 p.m.

Volunteering

Revelstoke has a strong history of volunteerism. Volunteers represent one of the strongest threads that tie a community together. As the community grows continuing citizen participation in community organizations and events will help keep our town the friendly, happening place we all know and love. Volunteering in Revelstoke will enrich your life. Current Volunteer opportunities are posted at the Community Centre or can be found online: www.resc.ca/volunteer_postings.html

For a list of local volunteer organizations and clubs visit:

www.revelstokecf.com/volunteers/index.html

www.revelstokecf.com/volunteers/index.html

or contact the Community Centre at 250-837-9351

"Special people have made their way to this community."



Library, Photo: Courtesy of David Rooney, The Revelstoke Current



Community Garden, Photo: Courtesy of Sarah Newton

Welcome Stay

Play Enjoy

Revelstoke

Comfort

Fun Support

Neighbours

Grow

Sense of place

Familiar faces

Belong

Home

Connection

Work

Community

Live

Excitement

Contribute

BC

Friendship

Brings us together...